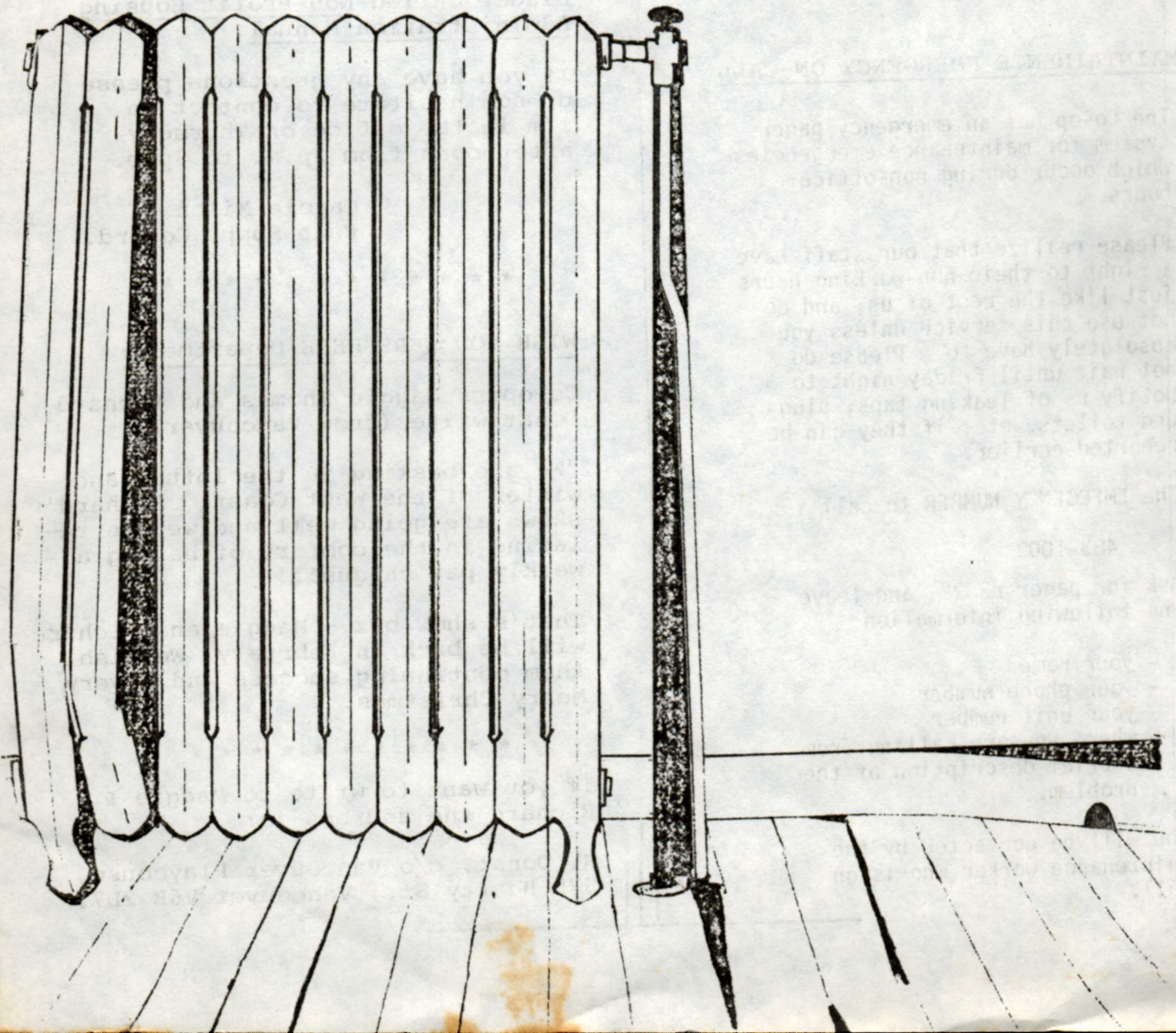


BAIN NEWSLETTER

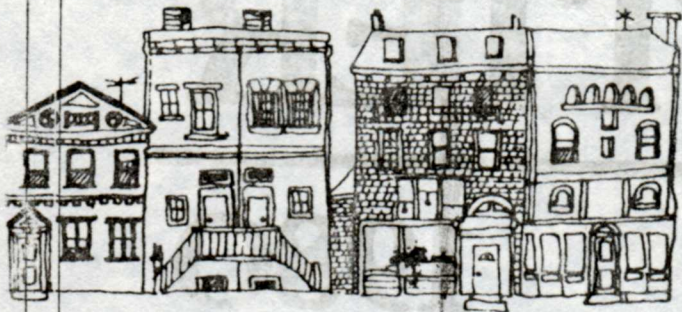
NOVEMBER

1980



WE ARE NOT AMUSED

Once again, production of the Bain Co-op News was delayed due to equipment failure.



Special thanks this issue...

to Tom McLaughlin, for typing, Karen Powers, for cover, Laana Taylor, whose been doing the calendar page these last few months, and all contributors, colaters, mimeographers, and distributors.



MAINTAINENCE EMERGENCY ON-CALL

The Co-op has an emergency pager system for maintenance emergencies which occur during non-office hours.

Please realize that our staff have a right to their non-working hours just like the rest of us, and do not use this service unless you absolutely have to. Please do not wait until Friday night to notify us of leaking taps, plugged toilets, etc. if they can be reported earlier.

The EMERGENCY NUMBER to call is:

483-1003

Ask for pager #3322, and leave the following information:

- your name
- your phone number
- your unit number
- where you are calling from
- a brief description of the problem.

You will be contacted by the Maintenance worker who is on call.

FOR SALE

HYDROPONIC UNIT consisting of 2 one by two bins, attachment legs for lighting, needed tubing, pump, and growing mediums.

\$300.00 or best offer.

Call Beth @ 465-4738.

PRE-CHRISTMAS SALE AND SWAP!!!

Hopefully... Dec. 13 - 14.
Bring toys, clothes, junk you want to get rid of. Call Beth if interested in getting together.

* * * * *

FOR YOUR INFORMATION:

To all co-op members, and particularly those receiving Provincial Rent Supplement: the guidelines set up by the Ministry of Housing for administering the Supplement Program are available for you to read. There are two copies but they must stay in the Office. Just drop by and ask one of the Office staff for the blue binder called Non-Profit Housing Administration Manual.

If you have any questions please do not hesitate to contact me. I'm in the office on Thursday afternoons from 2p.m. to 8p.m.

Carole Milon
Rent Supp. Co-ord.

* * * * *

WISH YOU WERE HERE Department:

Co-ops Maggie Thomas and Richard Donat write (from Vancouver):

"We are basking in the lotus-land winter of the West Coast. Richard's shows are going well and we are relaxing in the comfort of having a weekly pay cheque!!!"

That's show biz - Maggie and Richard will be back in February. We wish them continuing success and a very Merry Christmas.

* * * * *

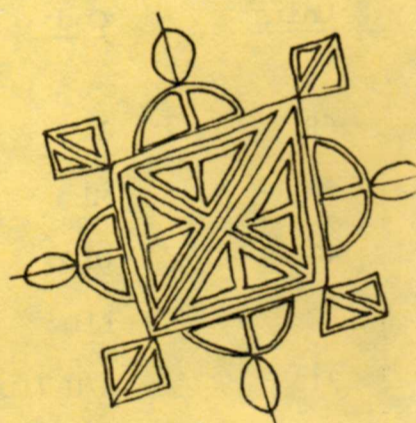
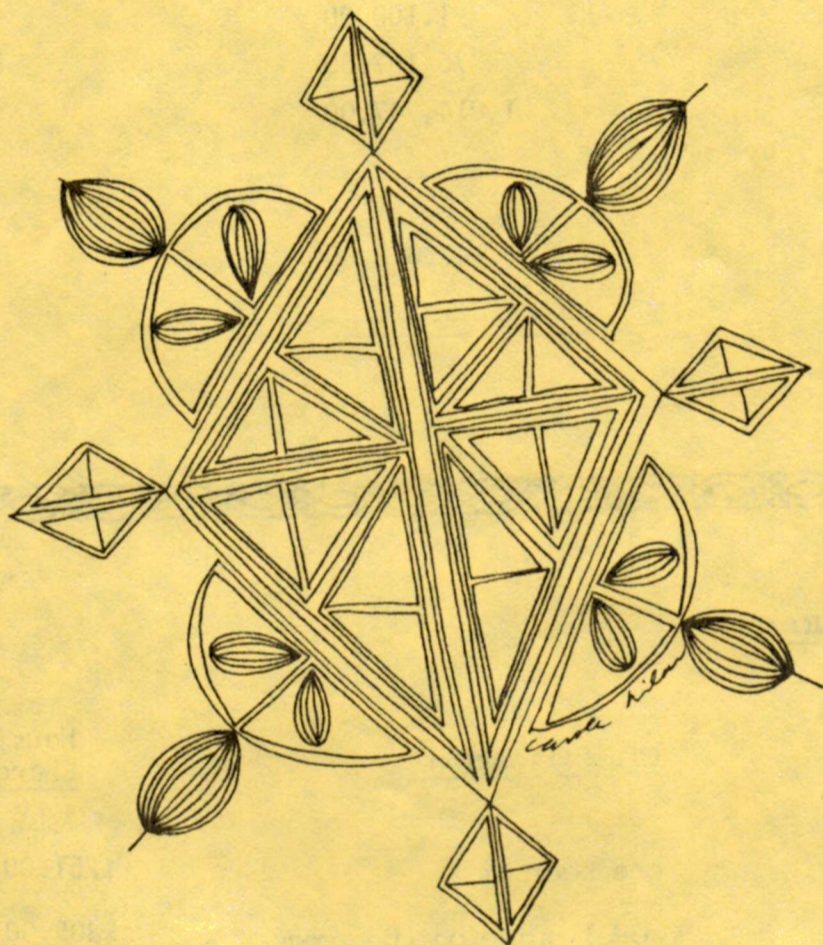
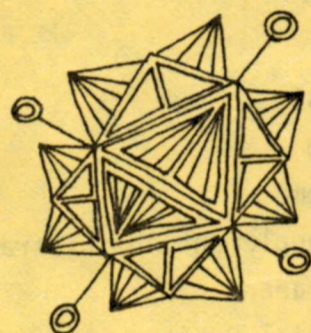
If you want to write to Maggie & Richard the address is:

R. Donat, c/o Vancouver Playhouse,
575 Beatty St., Vancouver V6B 2L7.

Handcrafted Ceramics ♦ Weaving ♦ Jewellery ♦ Toy

BAIN CO-OP ANNUAL

CRAFT SHOW
AND SALE



Saturday, December 6, 1980

11am - 7pm

Co-op office

100 Bain Ave., Toronto

(at the corner of Bain and Logan Ave.)

Clothing ♦ Cards ♦ Puppets ♦ Sculpture Etc.

BAIN APARTMENTS CO-OPERATIVE INCORPORATED

1981 Approved Operating Budget

Novmeber 1980.

REVENUE:

Interest	\$ 30,000.00
Parking	12,912.00
Laundromat	5,312.00
Rent Supplement Administration	6,900.00
Miscellaneous	1,100.00
Provincial Grant	76,107.00
Housing Charges	1,014,747.00
	<hr/>
TOTAL	1,147,078.00
	<hr/> <hr/>

* 1981 HOUSING CHARGE SCALE:

<u>No. of Units</u>	<u>Code</u>	<u>Classification</u>	<u>Housing Charge</u>
68	1	one bedroom	\$251.00
2	M1	model suite one bedroom	\$305.00
4	U1D	one bedroom with diningroom	\$326.00
1	L1D	one bedroom with diningroom	\$337.00
24	S2U (1D)	small two bedroom upper/one bedroom with diningroom	\$313.00
42	L2U	large two bedroom upper	\$326.00
2	ML2U	model suite large 2 bedroom upper	\$372.00
29	2L	two bedroom lower	\$337.00
31	2D	two bedroom with diningroom	\$359.00
24	3U	three bedroom upper	\$387.00
2	3D	three bedroom with diningroom	\$413.00
27	4	four bedroom	\$413.00
4	2H	two bedroom house	\$284.00

* Effective February 1/81 to Jan. 31/82.



During the summer the Food Co-op experienced a reduction in sales. This was largely due to vacationing members. In September we started opening on Thursday evenings as well as our regular Friday and Saturday hours and have since found that the number of sales and new members have increased. At the street festival this year we decided to try a larger menu in our Snack Bar. It was very encouraging to see the number of children who came with money in hand to purchase fruit or a home-baked bran muffin instead of the usual junk food they are so used to consuming. Needless to say, we did very well and ran out of practically everything before the day was over. Many thanks to those members who volunteered their time to make it happen!

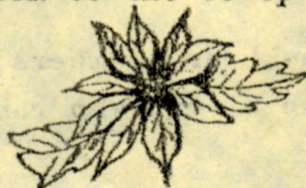
\$ FEES \$

Since the Food Co-op's inception almost two years ago, our membership fees have been \$12 for single adults, \$18 for a household of 2 adults with children and \$24 for a household of 2 adults with no children. At the last board meeting it was decided that the fees should remain as is for the next year beginning February 1, 1981. Anyone wishing to pay in advance can do so by contacting the Food Co-op manager.

ANY SUGGESTIONS?

We are always open to suggestions as to how we can improve the operation of our co-op. If you have some good ideas concerning store efficiency, member involvement, product purchasing or anything you think worthwhile, please fill out the suggestion tab below and drop it off at the Food Co-op or come in and tell us what you think.

It was suggested that we re-organize our space to take advantage of areas that are not being used efficiently. As a result, we should have a small space available where the children of our members can amuse themselves while parents shop. Anyone having clean, safe toys they are willing to donate can bring them to the co-op during shopping hours.



The weather is getting colder and yes, it looks like Christmas is coming. Our shopping hours for the holidays will be 4.30 p.m. to 7 p.m. Tuesday, December 23 and Tuesday, December 30 - without produce. We will NOT be open December 25, 26 and 27 or January 1, 2 and 3.

If you are thinking of baking for the holidays, we have candied fruit nuts, almond paste, chocolate chips and various flours available now.

NEWS FLASH

Kit Chapman, our manager, has handed in her resignation to be effective the end of November. Applications for this position will be accepted at the Food Co-op during shopping hours until Friday, November 21. Applicants should have organizational skills and be familiar with the running of a food co-op including co-ordinating volunteer workers. The rate of pay is \$5.40 per hour for 14 hours a week mainly on Thursdays and Saturdays plus monthly meetings with the board. Anyone wanting more information about the position should contact Steve Fruitman at 465-9464.

We (the Board of Directors) would like to take this opportunity, on behalf of all our members, to thank Kit for all the work she has done to help make our food co-op what it is today.

BOARD MEMBERS

Cathy Corrigan 44 The Maples	465-6783
Wolfe Erlichman 132 Riverdale Ave.	465-8045
Steve Fruitman 49 The Maples	465-9464
Beth Giles 11 The Elms	465-4738
Peter Howlett 9 The Lindens	461-9857
Carole Milon 56 The Maples	465-3226
Para Watts 29 The Lindens	465-9762

A warm welcome to our new board members Beth Giles and Carole Milon and many thanks to those of you who ran in the board elections.

Our regular hours at 5 The Aberdeens are:

Thursday 6 p.m. to 8 p.m.
Friday 4.30 p.m. to 7 p.m.
Saturday 10 a.m. to 1 p.m.

BAIN FOOD CO-OP BOYCOTTS

In the October 1 annual meeting of the Bain Food Co-op it was decided that we would honour the boycott of products from Chile and South Africa and those produced by Nestles and Kraft. But why boycott these products, and are boycotts really effective? These are some questions that come to mind.

As we are struggling to create an alternative food store in which we all have a say in what and how products are being sold, we must never forget that we are a part of and are greatly affected by the food system here in Canada and the world. Boycotts are therefore one method we can use to put political pressure on those governments or companies which are committing exploitative acts. Through boycotts we can also help to educate ourselves about how the food system really works.

The following are the companies or governments which we are boycotting with a short explanation why. If you have any questions or comments on these boycotts please approach the board.

Nestle

Nestle and other companies have aggressively promoted infant formula in developing countries for years. Many families have been convinced that bottle-feeding is the 'modern' way to feed their baby and is as good if not better than breast milk. However, these families often are without the resources to prepare it safely: lack of clean water to mix with the powdered formula, no place to sterilize the bottle, and too low an income to buy enough formula so they have to over-dilute it. The result is that millions of babies in developing countries are suffering from malnutrition and are dying from what is now called "baby bottle disease". In effect, the use of infant formula in poor countries is creating a new source of malnutrition.

Kraft

Kraft over the years has bought out and then closed down small cheese factories scattered throughout rural Ontario. By doing this they have been able to centralize their production and have increased their control of the cheese industry. They now control more than 70% of the cheese market in Ontario. This concentration of the cheese industry into one company's hand has contributed to the destruction of rural communities and has furthered the trend of allowing these big food companies to control our food system.

South Africa

In South Africa the white minority government is practicing apartheid which means Blacks who are 80% of the population are denied the right to vote. Blacks have rights to only 13% of the land and must follow an inferior educational system. Blacks are not allowed to move freely in their country and must always carry a pass-book which the police check
continued.....

Boycotts continued

constantly to see whether they are allowed to be where they are. If black people are employed in industries that are in 'white' areas their only accomodation is in "bachelor" hostels hundreds of miles from their families. The apartheid law forbids marriage between different races. Freedom of speech has been banned for the black people through a wide range of security laws.

Because the minority white government controls all of the economics in South Africa buying South African products would help to strengthen it's rule.

Chile

In 1970 Dr. Salvador Allende was elected as President, heading a socialist coalition called Popular Unity. They embarked on a programme of social and economic change. They nationalized the large copper mines, a number of manufacturing industries and almost the entire banking system, and vigorously pursued the agrarian land-reform programme in process. Popular Unity gained support from the lower classes but there was strong opposition from the middle-class and the wealthy. The U.S. saw its' commercial interests, especially the copper mines, threatened and feared that Chile would serve as an example to other South American countries.

Therefore the U.S. channeled \$11 million through the CIA to aid the opposition groups. The U.S. also blocked credits to Chile from international funds. These internal and external pressures culminated in the military coup of September 11, 1973.

The present military government headed by General Pinochet has turned Chile into a police-state, banning all freedom of speech, cutting back spending in health, education and social security, turning back the nationalized industries to their foreign owners, and halting the land reform programme. This junta has placed Chile under a state of siege, searching without warrent and arresting without charge and since the coup has tortured and murdered thousands of people, which have been documented by the U.N. Commission on Human Rights, as in South Africa because the junta controls all aspects of economic trade, it is only the junta and not the people that is strengthened by buying Chilian products.

- Peter Howlett
9 the Lindens

GET INVOLVED IN OUR CO-OP

If you want to get involved in the co-op, but are unable or unwilling to be on one of the volunteer committees, there's still a lot you can do. The Member Involvement Committee offers a few suggestions:

--Help a new member move in, or another member relocate. Call in a few days later to see how they're doing. Be a "buddy" for a new neighbour until they feel settled in.

--A lot of members need help in baby sitting. Help compile a list of reliable sitters for evening, lunch time and after school care. Help start a co-op day care centre for daytime or just after school care. Or help start a community committee to establish a combined day care drop in centre at Withrow.

--Help keep your courtyard looking great. Do some cleaning and planting in the spring, gardening in the summer, raking in the fall, and snow-shovelling in the winter.

--Can you type? Help is always needed in the Office. If you have skills in bookkeeping (Or you want to learn some) or know how to run duplicating machines, we need help with these in the Office t

--Help distributing internal mail or co-op wide flyers around the complex. Also needed are people who will telephone neighbours about committee or general meetings, or other urgent matters. Help distribute the Newsletter or information from the Office.

--Want to get to know other members? Volunteer some time as a receptionist in the Office. Get involved in organizing our annual street festivals, attend General meetings, or pick a special event for Co-op social events--rummage sales, games, bake sales, craft displays, music, jam-judging, etc. Your imagination is about the only limitation placed on you.

--Help clean up apartments after a move-out, or help clean up your back basement area to keep it neat and safe.

--Pass on your review of a movie, a restaurant or show to the Newsletter committee. Let them know what's been happening in your courtyard. Submit your graphics or a successful recipe for publication.

--Is your apartment big enough for courtyard meetings? Open your home to your neighbours for a few hours, or let the membership committee use it for the Open House evenings to give applicants an idea of the layout of the various sized apartments available here at Bain.

--The Membership Committee needs help in organizing Open House Nights. You could volunteer to contact applicants, or apartment showers, prepare coffee and cookies, or babysit so that someone else can get out for the evening.

--Do you love kids, but don't have any, or not enough? Be a courtyard 'parent'. Help organize special events or outings for the kids.

--Can you look after pets or plants for members when they're away or laid up?

Hope to see you out and about. This place is only as good as our members make it!! Now it's up to you.

Membership

New Members Welcoming Get-Together

Our first welcoming get-together was held on Sunday, Oct. 19th. Hot cider and cranberry bread were served from 4 until 6:00 p.m. Six adults and 4 children attended. The group their common frustrations of moving into apartments needing repairs but also shared commitment to living in our co-op and making it a better place to live.

New ideas were discussed and new members made commitments to getting involved in the co-op. Items discussed included:

- . developing a new membership welcoming list with information about laundromat and back basement keys, how to turn the gas on, etc.
- . difficulties with repairs. The idea of an apartments inspection committee was discussed.
- . finding block parents for each courtyard.
- . setting up a Bain Skills Exchange. We have carpenters, hairdressers, therapists, craftspeople, babysitters, seamstresses, etc. However, not everyone knows who these people are.

All of the above items will be followed up.

to All New Members:

If you were't able to attend our welcoming get-together on Oct 19th, we will be having another one on January. Invitations will be distributed. In the meantime, you are welcome to attend our Membership Involvement Committee meetings held the first Monday of each month at 8:00 p.m. Our committee holds orientation meetings for people interested in moving into our co-op. A slide show of the co-op is presented. We recently proposed an affirmative action policy for the co-op and we canvass new members. We welcome your ideas and criticisms. If you have any questions about our co-op please contact our chairperson, Vivian Green 465-9183.

Doonesbury



1980 NOVEMBER DECEMBER CALENDAR 1980

SUNDAY	MONDAY	TUESDAY	WEDNESDAY	THURSDAY	FRIDAY	SATURDAY
17	18	19	20	21	22	23
24	25	26	27	28	29	30
1 DECEMBER	2	3	4	5	6	7
8	9	10	11	12	13	14
15	16	17	18	19	20	21
22	23	24	25	26	27	28

COMMITTEE CONTACT

- RESIDENTS COUNCIL MIRIAM UOHL 466-9450
- FOOD CO-OP KATHY CORRIGAN - 465-6783
- FINANCE COMMITTEE HELEN SPROCK - 464-0782
- GRIEVANCE COMMITTEE MARIE FAUTLEY - 461-5636
- MEMBER INVOLVEMENT VIVIEN GREEN - 465-9183
- MAINTENANCE COMMITTEE MEL GREEN - 466-8440
- ANTI-KLAN COMMITTEE MIK HABERMA - 465-8693
- NEWSLETTER COMMITTEE PENNEY KOME - 463-7536

SPECIAL EVENTS (TOO BIG TO FIT IN THE DATE BOX)

- NOV. 20TH SOUTH RIVERDALE Community HEALTH CENTRE ANNUAL MEETING
- DEC. 6TH Co-op 2nd Annual Yams Craft Show & Sale 11 am - 7 pm.

PLEASE NOTE: IF YOUR GROUP OR COMMITTEE HAS A MEETING OR FUNCTION COMING UP THAT YOU WOULD LIKE INCLUDED IN THE CALENDAR, GIVE ME A COPY AND DROP ME A LINE. BE SURE TO SAY WHO, AND INCLUDE THE DATE, TIME & LOCATION.

LANA TAYLOR 461-4336 25 KINDERS